



Leading the way in Scanning Innovation

Brother Professional Scanning Solutions

Contents

Why Choose Brother?	3
Benefits of Brother Scanning Solutions	4
Scanners vs Multi-Function Centres	6
Applications	
Mobile Scanning	8
Compact Scanning	9
Desktop Scanning	10
Professional Scanning	11
Healthcare & Laboratories	12
Warehouse & Logistics	13
Government	14
Education	15
Field Services	16
Finance & Legal	17
Retail	18
Home Office	19
General Office	20
Bundled Software	22
Partnerships & Integrations	26
Drivers	28
Brother Solutions Interface	29
In Brother We Trust Contact Us	30



Why Choose Brother?

A trusted global leader in technology & innovation

For over 100 years, Brother has been a global leader in in-house manufacturing, technology and product innovation. With a complete range of ground-breaking solutions across the printing, scanning and labelling categories, they are renowned for their unsurpassed quality, reliability, and cost-effectiveness.

Today, Brother remains dedicated to those core values while delivering innovations in wireless connectivity and mobile productivity across its broad range of professional solutions. As a result, Brother solutions aren't just the most dependable solutions in the world, they're also the smartest.

With an 'at your side' approach, Brother always strives to put the customer first – everywhere, every time.

Benefits of Brother Scanning Solutions

Digitise and share

In today's business environment where organisations operate across multiple sites and locations, and where remote working is increasingly the norm, the ability to capture, digitise and share data and information quickly and easily is vital.

Real-time response

Urgency and quick action is required in today's fast-paced business world. With the ability to scan instantly for immediate customer and client data processing, work is continuous and efficient.

Business on the move

With business happening anywhere and everywhere, incorporating the efficiency of office processes in the field or from home ensures continuous productivity. Scanning allows access to information from anywhere and ensures tasks don't fall through the cracks.

Protect your information

From high level security breaches to simply losing physical paper trails, it's important to back up vital data, with password-protect where necessary, to safeguard against potential disaster.

Organisation is key

Manage and archive scanned data for more efficient processes for individual access or sharing across teams via cloud scan features.

System integration

Integration with existing systems and workflows or utilise the opportunity to improve business processes by creating new workflow and implementing new systems to support digitisation.

Free support

All Brother products are backed by our world-renowned service and support which is available free for the life of the product. Additional warranties can also be purchased so you can enjoy the same levels of assurance beyond the standard warranty period.





File optimisation

Save time with searchability across files utilising OCR (Optical Character Recognition) software to transform paper records into actionable data.

Better for the environment

Digitisation has a number of environmental benefits over paper processes, such as a reduction of paper required and as a result, the environmental footprint of your business.

Space saving

With real estate at a premium, saving valuable office space by removing storage facilities for unnecessary paperwork positively affects the bottom line.

Be competitive and grow

Digitisation is the way forward for all modern businesses. Focus on what you do best while relying on efficient backend processes that help you run your business better.

Scanners vs Multi-Function Centres

A single-function scanner may be more suitable for your scanning needs than a multi-function device.

Typical Brother scanner

Suitable for high volume scanning	✓
Automatic Document Feed(ADF)	✓
ADF supports multi-page, mixed batch media	✓
Paper feed thickness range	From 27-413gsm
Ability to scan plastic cards up to 1.4mm	✓
Double sided scanning	✓
Professional PC/MAC software suite included	✓
Hole punch removal	✓
Edge clean up	✓
De-speckle	✓
Page align	✓
Minimal maintenance	✓
Heavy-duty roller systems for frequent document processing	✓
Fast scanning speeds	✓
Enhanced connectivity into existing workflows	✓

Multi-function printer

Suitable for low volume scanning	✓
Automatic Document Feed (ADF)	Some models
Paper feed thickness range	Reduced
Double sided scanning	Some models
Lower scanning speeds	✓
Hole punch removal	✓
Page align	✓





Mobile Scanning

Brother's range of mobile scanners offer fieldworkers a more convenient way of securing and sharing business critical information whilst out on the road.

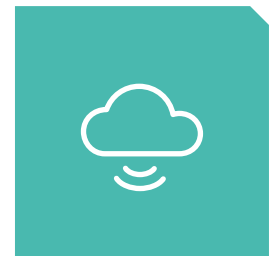
Select from USB powered or a rechargeable battery for professional scanning on the go. Compact and lightweight, users can scan documents direct to mobile devices for anywhere, anytime business mobility.

Key Applications

- Contracts
- Order forms
- ID documents and cards
- Proof of delivery
- Statements
- Receipts and expenses
- Ad hoc scanning jobs

Ideal for:

- Field based teams
- Delivery drivers
- Independent financial advisors
- Mobile workers
- Home use
- Smaller workstations



Brother DS-940DW

Compact, portable and lightweight portable document scanner with duplex scanning and wireless connectivity.

- Up to 15ppm* simplex
- Single pass 2-sided (duplex) scan up to 15ppm*
- Scans up to 600 x 600 DPI
- Hi-Speed USB 3.0 and Wireless
- Supports scan to smartphone
- Straight path and U-path paper control system for reduced output space
- Lithium Battery
- MicroSD Card Slot
- Pull scan and upload/download to/from cloud services from your mobile device
- Bundled with PaperPort Software with post-capture processing features
- Warranty: 12 months RTB



Brother DS-640

Compact, portable and lightweight portable document scanner.

- Up to 15ppm* simplex
- Scans up to 600 x 600 DPI
- Hi-Speed USB 3.0
- Bundled with PaperPort Software with post-capture processing features
- Warranty: 12 months RTB



Compact Scanning

Brother's compact mobile scanner is ideal for smaller workstations and has been designed to rapidly digitise a wide variety of documents to maximise your office space.

This easy to use device includes built-in wireless connectivity, 2-sided (duplex) scanning and a dedicated plastic ID card slot and is ideal for home offices, healthcare reception desks and retail countertops.

Key Applications

- Contracts
- Identification documents
- Receipts
- Orders
- Records
- Travel documents
- Plastic ID
- Credit cards

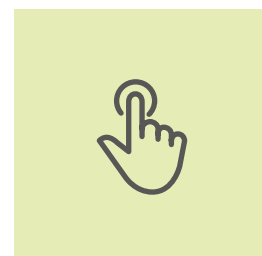
Ideal for:

- Healthcare receptions
- Medical departments
- Retailers
- Field based sales teams
- Home offices

Brother ADS-1700W

Compact document scanner that provides high quality, high speed document scanning at a touch of a button.

- Single pass 2-sided (duplex) scan up to 50ipm*
- USB & Wireless
- Up to 600 DPI optical resolution
- Up to 1,200 DPI interpolated
- 20 sheet Automatic Document Feeder (ADF)
- USB Host - Scan to USB Drive
- 7.1cm LCD display
- Nuance PDF Converter Professional 8
- Nuance Power PDF
- Bundled Brother and 3rd party software for OCR card scanning and post-capture processing features
- Card feed input
- Warranty: 12 months RTB



Desktop Scanning

Built for demanding high volume workplaces, Brother's range of Kofax-certified desktop scanners allow busy departments to scan and archive a larger number and wider variety of documents quickly and easily.

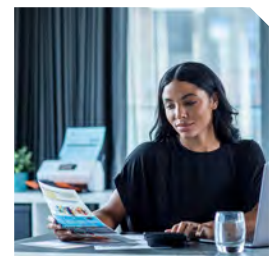
Ideal for batch scanning, the desktop range ensures the safe, accurate and reliable conversion of paper documents into digital assets direct into existing workflow streams on PC, Mac or Linux operating systems.

Key Applications

- Invoices and credit notes
- Contracts
- Insurance policies
- Disaster recovery records
- Multi page documents
- Application forms
- Student records
- Scanning to USB host

Ideal for:

- Busy office environments
- Finance departments
- Logistics and delivery offices
- Healthcare offices
- Retailers
- Education departments



Brother ADS-3100

With industry-recongised software and scanning tools included, this simple, compact document scanner provides you with all your digitisation needs.

- Dual CIS Scan Technology
- Single pass 2-sided (duplex) scan up to 80ipm
- Up to 600 DPI optical resolution
- Up to 1200 DPI interpolated
- 60 sheet Automatic Document Feeder (ADF)
- USB 3.0 and USB Host - Scan to USB drive
- Bundled with Brother and 3rd party software with post-capture processing features



Brother ADS-3300W

Combining high-functionality with a simple, compact design and low-cost footprint, this document scanner provides access to industry-recognised software and scanning tools as standard.

- Dual CIS Scan Technology
- Single pass 2-sided (duplex) scan up to 80ipm
- Up to 600 DPI optical resolution
- Up to 1200 DPI interpolated
- 60 sheet Automatic Document Feeder (ADF)
- USB 3.0, wireless or ethernet connectivity
- 7.1cm colour LCD Touchscreen
- Bundled with Brother and 3rd party software with post-capture processing features



Professional Scanning

Brother's range of professional scanners have been designed to enhance digital workflow for paper intense departments.

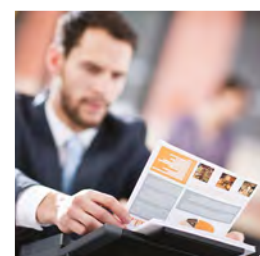
With excellent paper handling, advanced image processing and a range of scan-to functions, the Professional range is perfect for high volume scanning and archiving within hard copy-centric businesses.

Key Applications

- Shipping certificates
- Client/student records
- Delivery notes
- Financial documents
- Order forms
- Legal documents
- Contracts

Ideal for:

- Medical departments
- Logistics and shipping companies
- Finance departments
- Busy offices
- Government departments
- Schools, colleges and universities
- Paper intense industries
- Disaster recovery preparation



Brother ADS-4700W

A professional desktop document scanner designed to keep up with the fast pace of your business while simplifying operational processes - it's built for purpose to maximise productivity.

- Dual CIS Scan Technology
- Single pass 2-sided (duplex) scan up to 80ipm
- Up to 600 DPI optical resolution
- Up to 1200 DPI interpolated
- 80 sheet Automatic Document Feeder (ADF)
- USB 3.0, wireless or ethernet connectivity
- USB Host - Scan to USB drive
- 10.9cm colour LCD Touchscreen
- Bundled with Brother and 3rd party software with post-capture processing features



Brother ADS-4900W

Designed to maximise your productivity, this high-performance, professional desktop document scanner makes uninterrupted, high-volume scanning in fast-paced environments effortless.

- Dual CIS Scan Technology
- Single pass 2-sided (duplex) scan up to 120ipm
- Up to 600 DPI optical resolution
- Up to 1200 DPI interpolated
- 100 sheet Automatic Document Feeder (ADF)
- USB 3.0, Dual band (2.4Ghz / 5Ghz) wireless and ethernet connectivity
- USB Host - Scan to USB drive
- 10.9cm colour LCD Touchscreen
- Bundled with Brother and 3rd party software with post-capture processing features



Healthcare & Laboratories

APPLICATIONS

Built for demanding high volume workplaces, Brother's range of Kofax-certified desktop scanners allow busy departments to scan and archive a larger number and wider variety of documents quickly and easily.

Ideal for batch scanning, the desktop range ensures the safe, accurate and reliable conversion of paper documents into digital assets direct into existing workflow streams on PC, Mac or Linux operating systems.

Required Functionality

- Mixed document feeding
- 2-sided (duplex) ID card scanning
- Multi-feed detection
- Long paper scanning
- Compact footprint
- Bespoke integration with Healthcare Practice Management platforms
- Document routing

- Patient records
- Patient prescriptions
- Appointment cards
- ID cards
- Patient letters and other documentation
- In-home care

Recommended Devices



ADS-1700W



ADS-3100



ADS-4700W



DS-940DW

Warehouse & Logistics

APPLICATIONS

Digitally converting delivery documents makes them extremely easy to manage. In particular, it accelerates fulfilment times, increases the efficiency of back-office operations and brings filing administration into compliance with disaster recovery rules.

Required Functionality

- High speed, high volume capability
- Mixed document feed
- Multi-feed detection
- Blank page removal
- PDF file splitting
- Searchable digital formats

- Delivery slips
- Shipping documents
- Certificates of origin
- Regulatory documents
- Invoice processing



Recommended Devices



ADS-3300W



ADS-4700W



ADS-4900W

Government

APPLICATIONS

Government and other public offices can manage personal information efficiently by converting a wide range of paper documents into searchable, secure and compliant digital data archives. For this task, scanners must cater for high volumes and compliance with rigid security/data protection requirements while remaining cost effective.

Required Functionality

- High speed, high volume capability
- Mixed document feeding
- Multi-feed detection
- Blank page removal
- Automatic memory erase

- Application Forms
- Certificates
- Permissions
- Licences
- Documents for archive



Recommended Devices



ADS-3300W



ADS-4700W



ADS4900W

Education

APPLICATIONS

Schools, colleges, universities and other offices within the education sector can improve efficiencies by scanning and automating paper based processes so they can be seamlessly integrated into their own student record and back office document systems.

Required Functionality

- High speed, high volume
- Mixed document feeding
- Long paper scanning
- Single pass 2-sided (duplex) scanning
- Scan to cloud (Onedrive, Google Drive)
- Integration with student records management platforms (contact Brother for more information)

- Student records
- Official documents
- Classroom work
- Reports
- Workbooks and homework
- Letters and memos
- Permission slips

Recommended Devices



ADS-3100



ADS-3300W



ADS-4700W



ADS-4900W

Field Services

APPLICATIONS

For business people on the go, mobile scanning offers the perfect solution especially when space and availability of mains power and centralised computers are limited. Hard copies can be digitised, optimised and effectively stored or shared without the need for a computer.

Required Functionality

- High speed
- Mobile
- Lightweight
- Portability
- ID card feed
- Automatic cropping
- Small footprint
- Battery or USB powered

- Customer orders
- Identification documents
- Utility bills
- Forms
- Expenses
- ID cards, credit cards, drivers licenses

Recommended Devices



DS-640



DS-940DW

Finance & Legal

APPLICATIONS

Finance and legal companies have an increasing need for paperless document management whether for compliance, internal collaboration or customer requirements. Scanning helps reduce the time and effort in long term storage and management of contracts. Brother scanners help bridge the gap between paper processes and effective digitisation.

Required Functionality

- High speed, high volume
- Mixed document feeding
- Automatic cropping and de-skewing
- Blank page removal
- Bespoke integration with Finance and Legal management platforms (Contact Brother for more information)

- Legal contracts
- Insurance policies
- Invoices
- Statements
- Accounting records
- Receipts
- HMRC documents



Recommended Devices



ADS-1700W



ADS-3100



ADS-3300W



ADS-4900W

Retail

APPLICATIONS

Retailers can convert a wide range of daily transactional documents into digital assets quickly and accurately while sales dockets, orders and invoices can be scanned in the moment giving the business owner or manager peace of mind. Scans can be integrated with sales management platforms or shared to internal or external network folders, USB drives or cloud platforms.

Required Functionality

- High speed, high volume capability
- Mixed document feeding
- Small footprint
- Automatic cropping and de-skewing
- Blank page removal
- Scan to PC, USB or cloud service

- Sales dockets and receipts
- Stock and production records
- Copies of orders, invoices and credit notes
- Customer credit forms
- Dispatch and delivery documents
- Goods returned paperwork



Recommended Devices



ADS-1700W



ADS-3300W



ADS-4900W

Home Office

APPLICATIONS

Scanning for the home office allows space saving and gives peace of mind knowing that important files, photos and documents are backed up and can be accessed from mobile devices.

Required Functionality

- Scan to home network, USB or cloud
- 2-sided (duplex) scanning
- Small footprint and energy efficient
- Mixed document feed
- Up to 60 sheet capacity
- Multi-feed detection
- Wireless network and mobile app integration
- Programmable interfaces

- Photographs
- Bank statements
- Identification documents
- Receipts
- Wage slips
- Invoices and financial papers
- Client briefs and agreements



Recommended Devices



ADS-1700W



ADS-3100



ADS-3300W

General Office

APPLICATIONS

Offices can benefit from scanning a wide range of business documents helping reduce costly storage space and improve business efficiencies, cut down on insecure hard copies, meet environmental targets, achieve HR data compliance guidelines, enable simple document collaboration and improve business efficiencies.

Required Functionality

- High speed, high volume capability
- Multi-feed detection
- Automatic cropping and de-skewing
- Blank page removal
- Small footprint
- Automatic 2-sided (duplex) scanning
- Scan to cloud, email and server

- Invoices
- Receipts and expenses
- Wage slips and tax forms
- Employee and customer records
- Internal process forms
- Confidential documents



Recommended Devices



ADS-1700W



ADS-3100



ADS-3300W

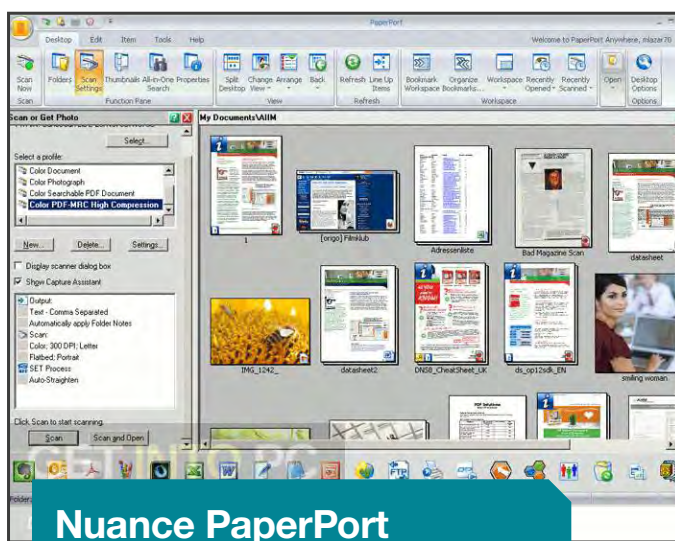


ADS-4900W



Bundled Software

Our suite of document scanners includes a range of software to ensure you have what you need to digitise and organise documents. From basic document management, PDF editing, optical character recognition to document security.



**Nuance PaperPort
(Windows)**

PaperPort aids users to effectively scan, organise, find and share documents (and photos). It combines the power of document scanning services, the efficiency of digital desktop organisation and search, and the convenience of high-quality PDF document creation, assembly and sharing in one easy-to-use application. Eliminate paper clutter, go green and organise your home or small office once and for all with PaperPort 12.

- Scan to searchable PDF
- Scan-To PDF Searchable, TIFF, BMP, DOC, XML, XLS, TXT
- Scanner enhancement tools on the desktop
- Customisable scanner profiles

Included with:

- DS-640
- DS-940W
- ADS-1700W
- ADS-3100
- ADS-3300W
- ADS-4700W
- ADS-4900W





Kofax Power PDF (Windows)

Kofax Power PDF, the smarter PDF choice for business users, provides the most accurate document conversion to 100% industry-standard PDF.

- Create PDF files from virtually any PC application
- Convert PDF files into fully formatted documents
- Scan more productively
- Create searchable PDF files and fillable forms
- Assemble documents with ease
- Perform smarter searches
- Manage multi-layer graphics
- Bring multimedia to PDF
- Enhance document security

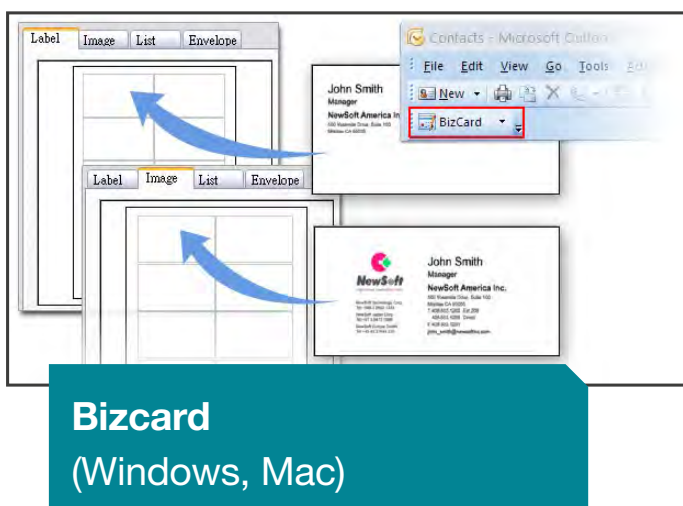
Included with:

- DS-640
- DS-940W
- ADS-1700W
- ADS-3100
- ADS-3300W
- ADS-4700W
- ADS-4900W

KOFAX



Bundled Software

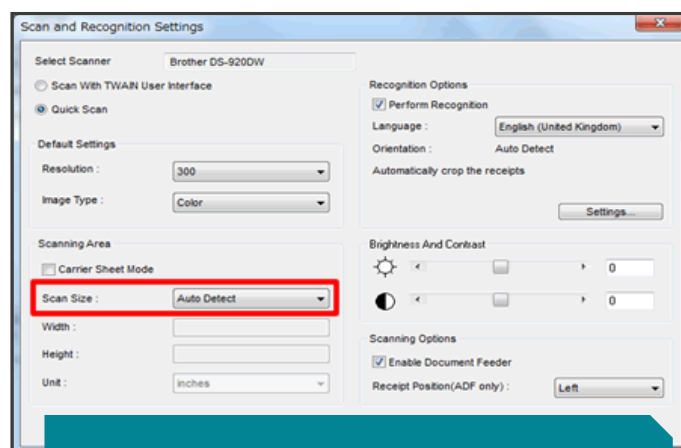


Presto Bizcard is a complete contact management solution that lets you scan, edit and synchronise business card contacts to various contact management software applications. Bizcard is ideal for helping users stay in touch and organize critical business contacts.

- Scan and import contact information directly into Microsoft Office or contact management system
- Convert images of cards into information that is available for searching and editing in databases
- Intuitive and simple user interface for quickly finding contact information
- Easily save and manage your contact information
- Multi-language text display
- Smart Search feature allows you to quickly find contact information
- Option of including the front and back information from business cards

Included with:

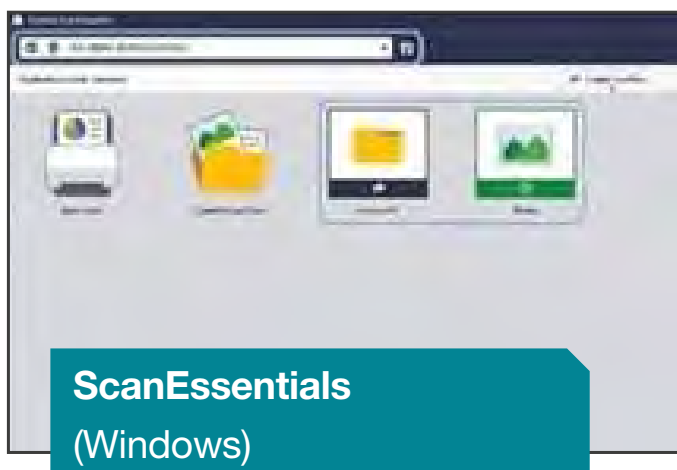
- DS-640
- DS-940W
- ADS-3100
- ADS-3300W



Packaged with Brother's range of Mobile Scanners, DSmobile Capture allows the user to save scanned documents in PDF, multi-page PDF, JPG, BMP, GIF, TIFF or multi-page TIFF formats.

Included with:

- DS-640
- DS-940W



Bundled with the Brother ADS series, ScanEssentials and ScanEssentials Lite software is Windows-based scanning application that streamlines the scanning workflow and provides professional scanning functionality.

- Basic Scan – perform all the basic operations related to the scanning function, including creating a workflow
- Open File & Scan – add scanned pages or change/edit pages in existing files
- Workflow – save frequently used scan settings as your workflow

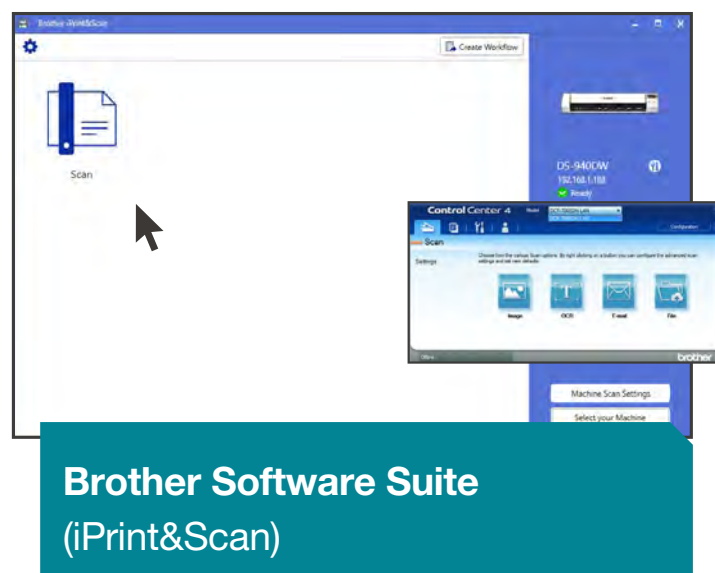
That allows you to not only scan documents but create workflows and save them securely to your network.

ScanEssentials Lite included with:

- ADS-3100
- ADS-3300W

ScanEssentials Standard included with:

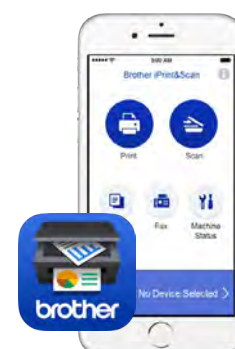
- ADS-4700W
- ADS-4900W



The Brother Software Suite of iPrint&Scan provides users with efficient and secure document management capabilities with one-touch workflows, secure PDF and scan direct to cloud storage such as Onedrive, Google Drive, Box and Dropbox. The iPrint&Scan app is free to download from your app store, with the desktop version bundled with the below devices.

Included with:

- ADS-1700W
- ADS-3100
- ADS-3300W
- ADS-4700W
- ADS-4900W
- DS-640
- DS-940W



Partnerships & Integrations

Digitisation is inextricably linked to business processes and workflows. Brother has partnered with document and imaging software industry leaders to provide you with an end to end solution.

From PDF creation, editing and archival to integration with practice management and customer management platforms, Brother can help tailor the right solution for your business, including digitisation and workflow management.

Ysoft Document Capture



Ysoft's automated scan workflows take the complexity out of scanning, resulting in digital documents that are accurate, consistently formatted and securely delivered to predefined destinations. The software helps businesses to increase productivity, improve document capture, processing and delivery, provides advanced processing features and create customisable workflows for particular tasks and uses.

FileBound



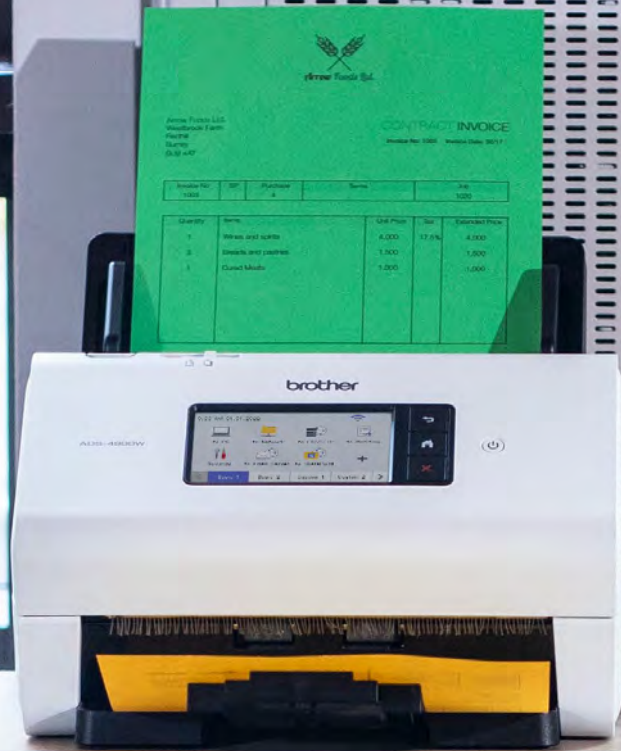
FileBound is a secure, cloud-based, document management system that automates enterprise work. It allows you to harness the full power of workflow automation. Filebound handle the fine details so you and your team can effortlessly manage time-consuming business processes. FileBound also eliminates tedious and costly paper-based processes which increases your efficiency while adhering to your industry's compliance standards.

Kofax



This intelligent automation software platform helps organisations transform information-intensive business processes, reduce manual work and errors, minimise costs, and improve customer engagement. Combining RPA, cognitive capture, process orchestration, mobility and engagement, and analytics to ease implementations, Kofax allows the delivery of dramatic results that mitigate compliance risk and increase competitiveness, growth and profitability for your business.

For more information on Brother Partnerships, get in touch at www.corpsolutions.brother.com.au



Green Paper Co.
Green Paper Co. Ltd.
Head Office 1st floor
Rising
Square
01234 567

CONTRACT INVOICE
Invoice No: 12345 Invoice Date: 2023

Invoice No	Qty	Material	Unit	Price
12345	1	Green Paper	A	1000

Quantity	Item	Unit Price	Tax	Extended Price
1	Green and white	4,000	17.5%	4,000
2	Green and white	1,500		1,500
3	Green and white	1,000		1,000



Drivers

Brother provides industry standard drivers so that bespoke integration with management platforms in various industries is seamless and easy to configure.

ISIS

(Image and Scanner Interface Specification)

ISIS has become the industry standard method of digitising documents, specially developed to store hardcopy documents to electronic archives and giving clear, accurate and secure results with more control over image quality.

It offers maximum compatibility not only with leading document management software such as Documentum, eCopy, Kofax and more, but also with sophisticated IT systems using CITRIX and Terminal Services environments.

By introducing a consistent interface across different platforms, ISIS reduces the costs of implementation, training and maintenance.



ICA

(Image Capture)

Image capture is an application program from Apple that enables users to upload documents from Brother scanners, which are either connected directly to the computer or the network.

TWAIN

(Technology With An Interesting Name)

TWAIN is an industry standard software interface used to transfer still images into applications from Brother scanners on Windows PC and Apple Mac computers. The TWAIN standard is published, maintained, promoted and supported by the TWAIN Working Group.



SANE

(Scanner Access Now Easy)

Scanner Access Now Easy (SANE) is an application programming interface that provides standardised access to any raster image scanner hardware. The standardised interface makes it possible to write just one driver for each scanner device instead of one driver for each scanner and application.

WIA

(Windows Image Acquisition)

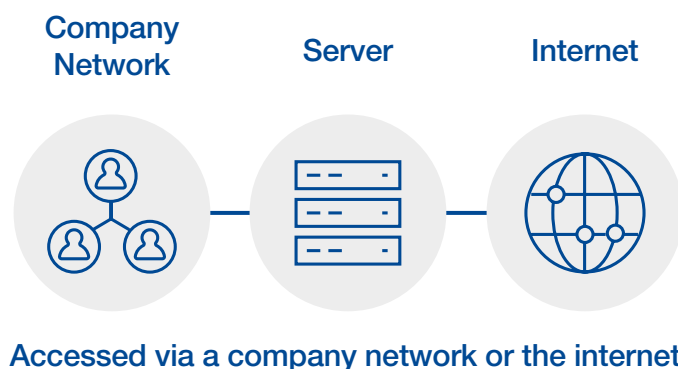
WIA is a Device Driver Interface (DDI) and an API that is used for acquiring digital images from Brother scanners and transferring them to the user's computer system.

Brother Solutions Interface

Brother Solutions Interface (BSI) is a platform that enables third-party developers to build custom solutions for or integrate with Brother devices.

Customised user interfaces can be created to provide new capabilities helping you to improve operational workflow and security while also having the added benefit of reducing costs.

Using Web Services technology, all solutions are stored and run on a server rather than inside the individual Brother hardware. This means that updates only need to be made to the server and not potentially hundreds of devices connected to it, saving time for deployments and updates.



Benefits of BSI



Affordability

BSI devices are significantly cheaper than competing open interface devices that target larger businesses and enterprises.



Easy to grow your business

To cater to customers' unique and changing needs, BSI allows developers to create a wide range of solutions such as document management, forms and workflow solutions.



Easy to develop

The BSI developer package utilises a clear template that only requires a basic understanding of web service application development, PC and network.

There is only one set of commands working across all BSI devices regardless of specifications.



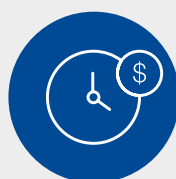
Comprehensive support

Brother provides BSI support in the form of a developer toolkit, as well as online support.



Easy to deploy

BSI utilises web services technology so all created solutions are stored and run from a central server rather than on local devices, reducing the time and effort when deploying or updating applications.



Time and cost savings

Compared to competing open interface platforms, BSI uses one set of standardised commands that work across BSI devices no matter the spec.

In Brother We Trust

Over the years, millions around the world have grown to recognise Brother as a brand that can be depended on time after time. At Brother, our commitment will always be to put our customers first, which is why we remain dedicated to you far beyond the purchase dates of our products. This is reflected in the outstanding service and warranty that you will enjoy with every Brother product.

Contact Us

Brother Commercial Division
corpsolutions.brother.com.au
corporatesales@brother.com.au